

This Page Is Inserted by IFW Operations
and is not a part of the Official Record

BEST AVAILABLE IMAGES

Defective images within this document are accurate representations of the original documents submitted by the applicant.

Defects in the images may include (but are not limited to):

- BLACK BORDERS
- TEXT CUT OFF AT TOP, BOTTOM OR SIDES
- FADED TEXT
- ILLEGIBLE TEXT
- SKEWED/SLANTED IMAGES
- COLORED PHOTOS
- BLACK OR VERY BLACK AND WHITE DARK PHOTOS
- GRAY SCALE DOCUMENTS

IMAGES ARE BEST AVAILABLE COPY.

**As rescanning documents *will not* correct images,
please do not report the images to the
Problem Image Mailbox.**

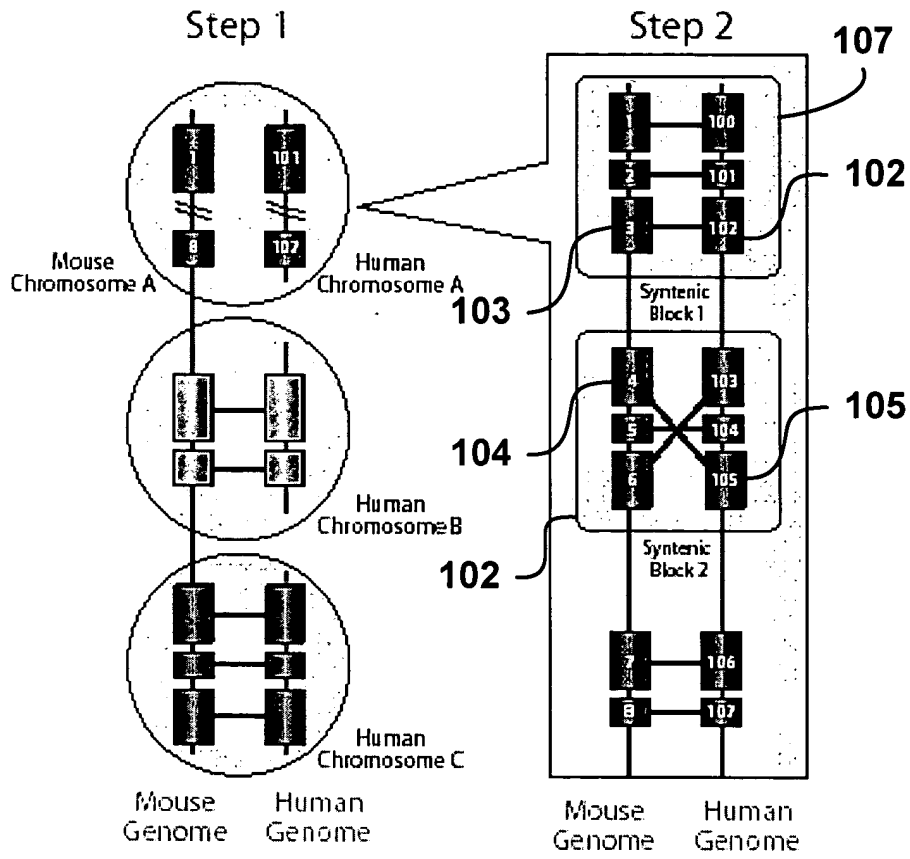


Figure - 1

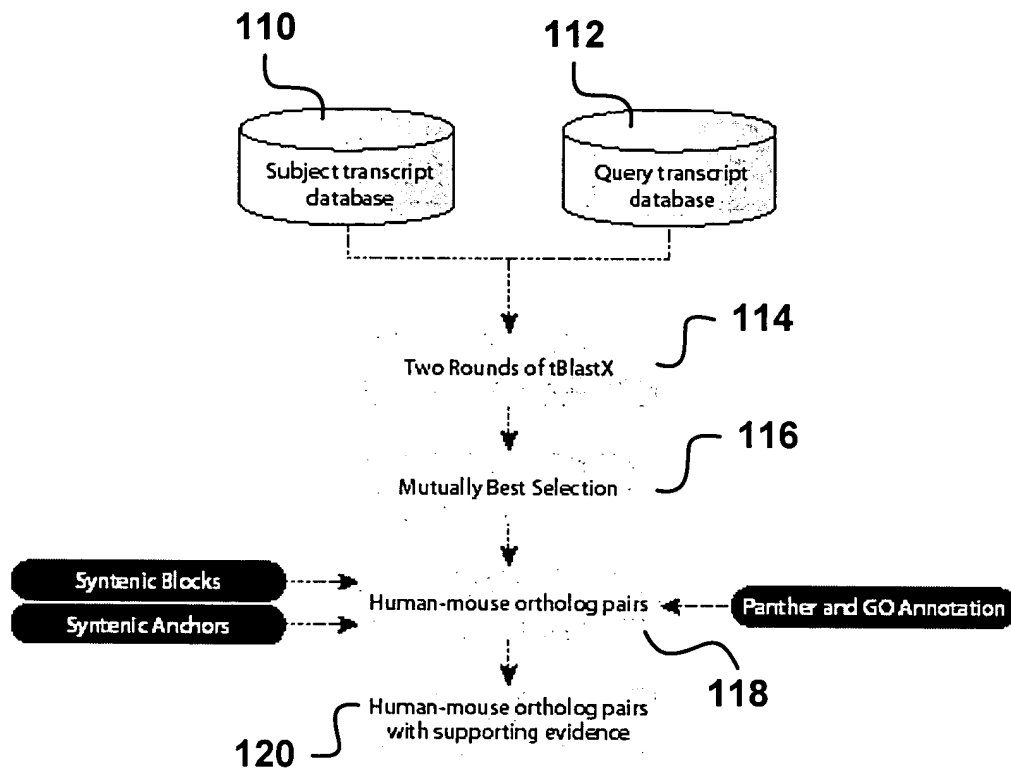


Figure - 2

Title: METHOD FOR IDENTIFYING, VIEWING, AND ANALYZING SYNTENIC AND ORTHOLOGOUS GENOMIC REGIONS BETWEEN TWO OR MORE SPECIES

Inventors: Moore, et al
Atty. Ref.: 9692-000030

3/22

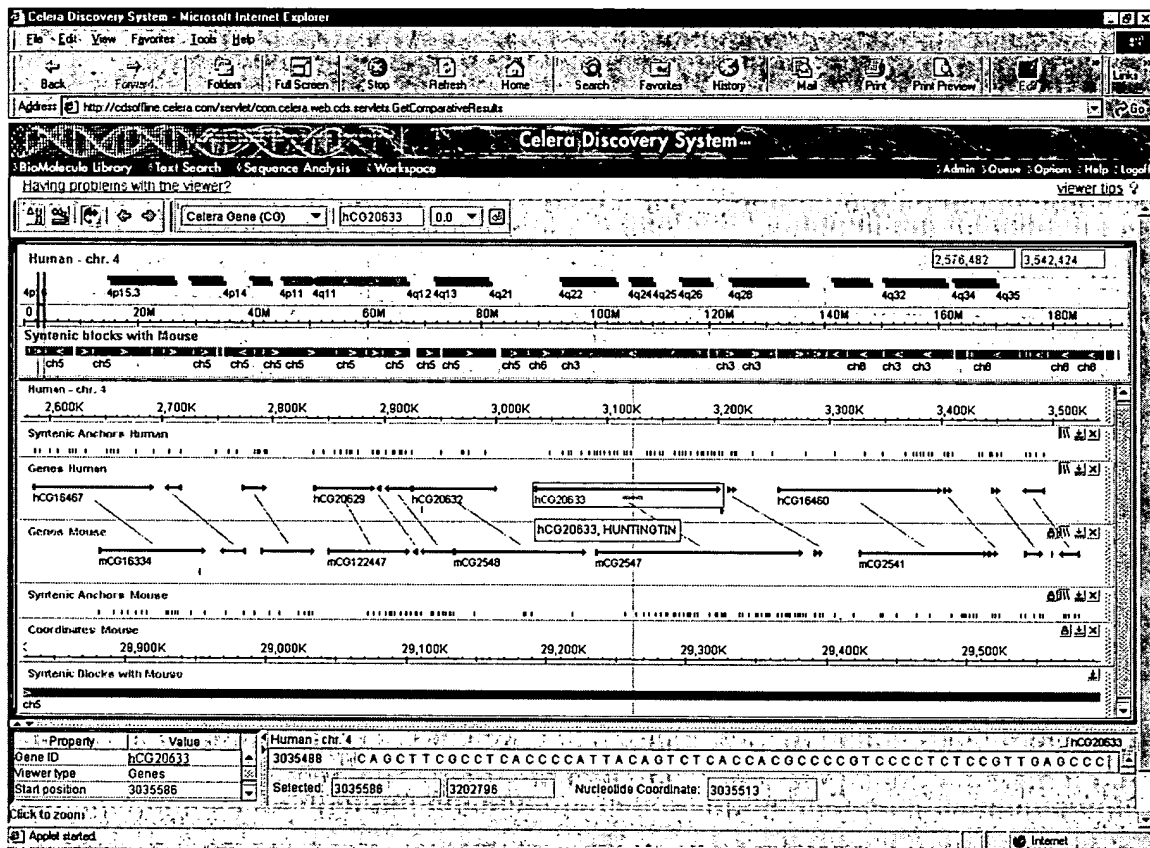


Figure - 3A

Title: METHOD FOR IDENTIFYING, VIEWING, AND ANALYZING SYNTENIC AND ORTHOLOGOUS GENOMIC REGIONS BETWEEN TWO OR MORE SPECIES

Inventors: Moore, et al
 Atty. Ref.: 9692-000030

4/22

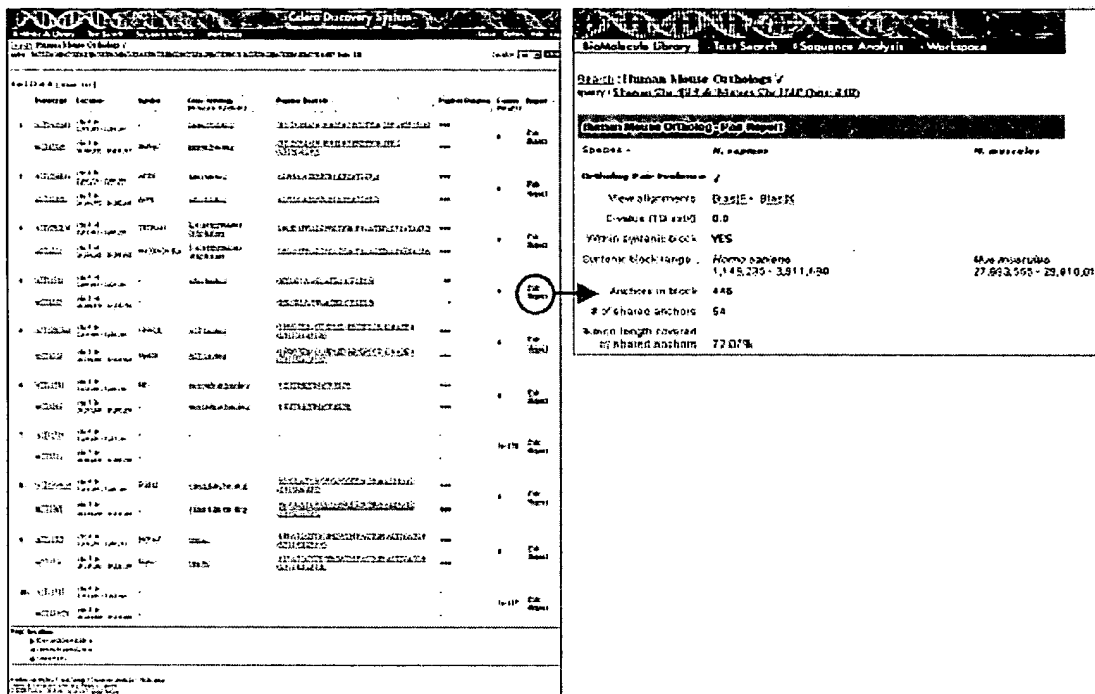


Figure - 3B

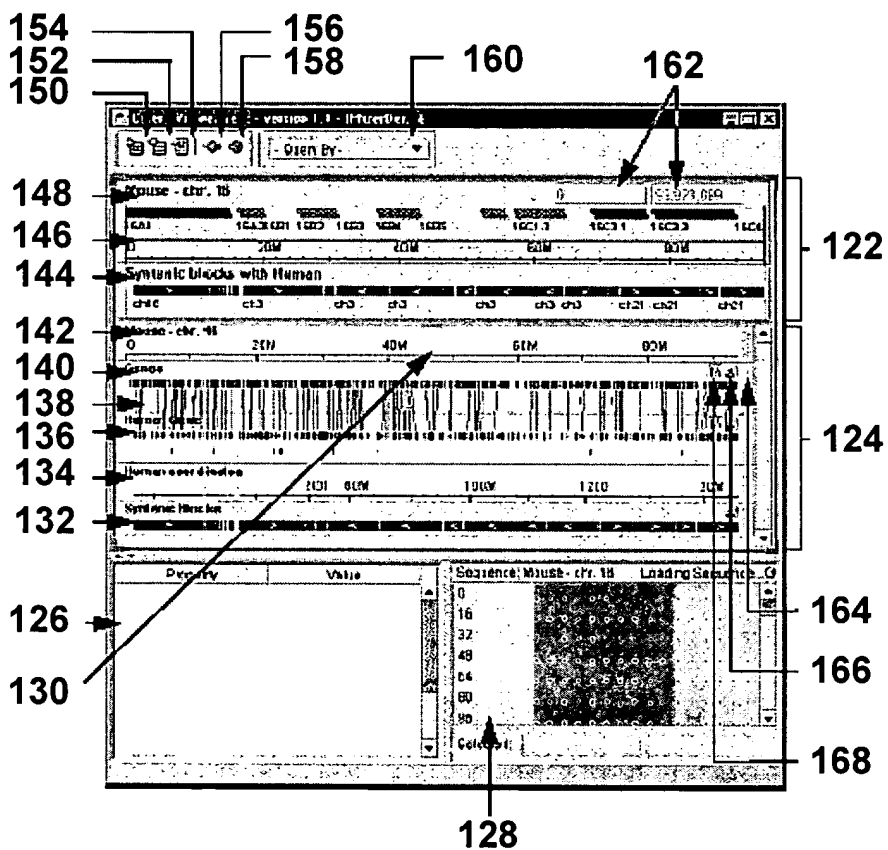
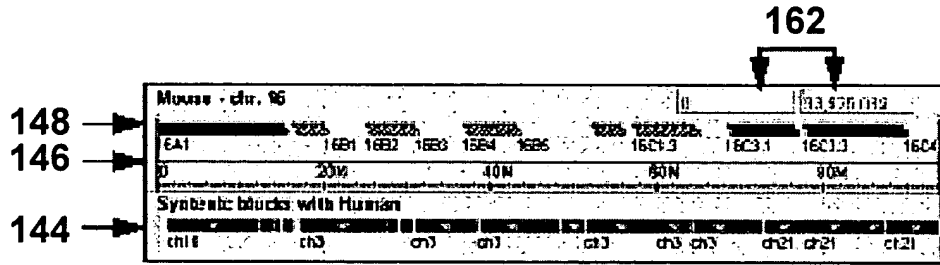


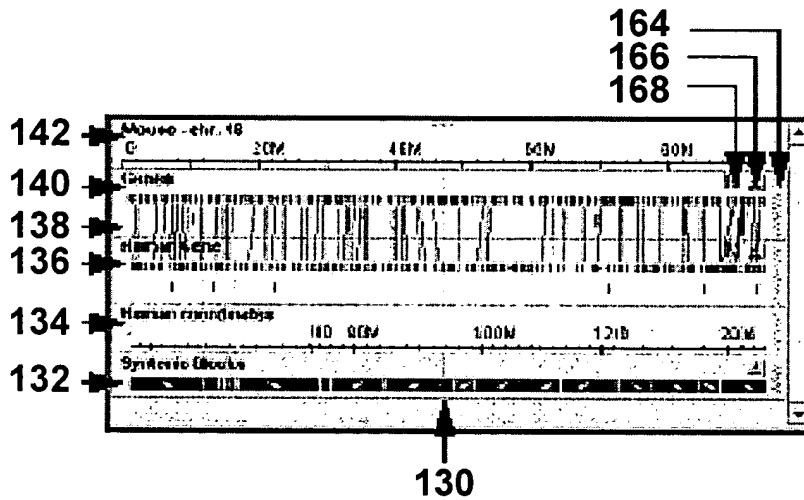
Figure - 4

6/22



122

Figure - 5



124

Figure - 6

Title: METHOD FOR IDENTIFYING, VIEWING, AND ANALYZING SYNTENIC AND
ORTHOLOGOUS GENOMIC REGIONS BETWEEN TWO OR MORE SPECIES

Inventors: Moore, et al
Atty. Ref.: 9692-000030

7/22

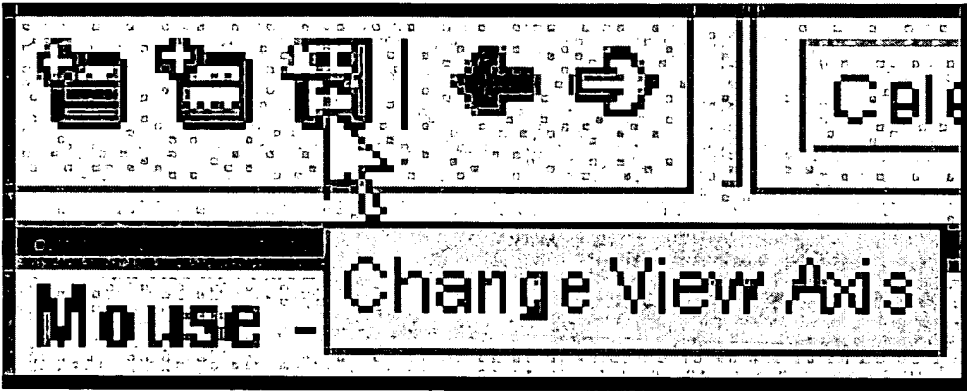


Figure - 7

8/22

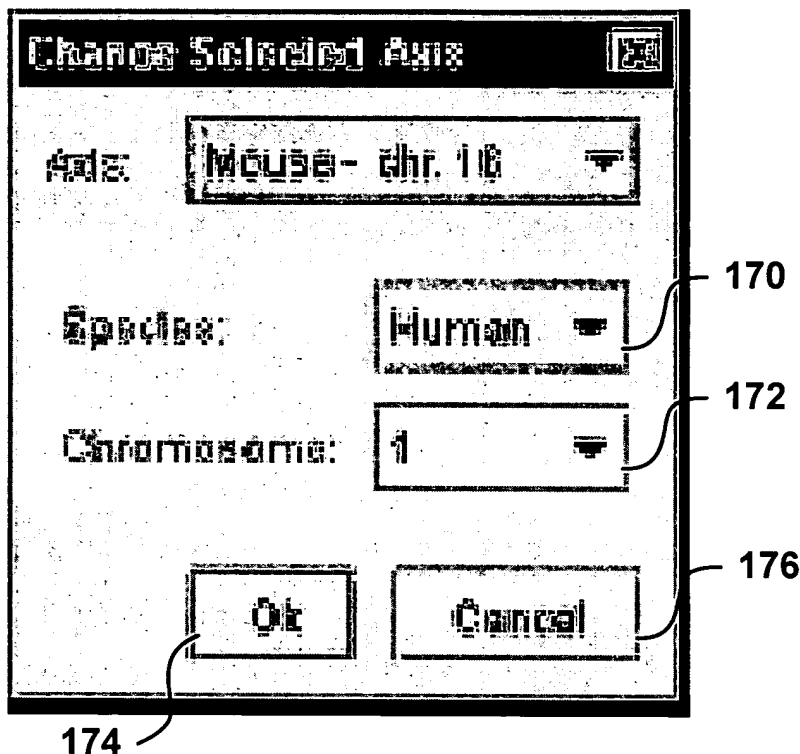


Figure - 8

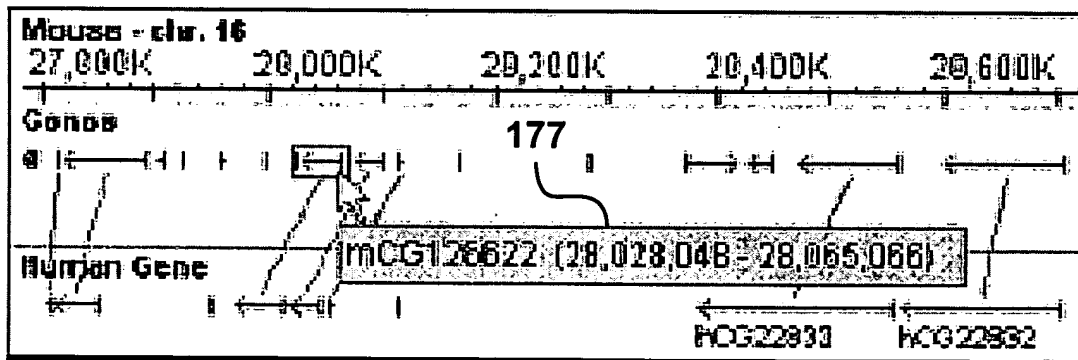


Figure - 9

9/22

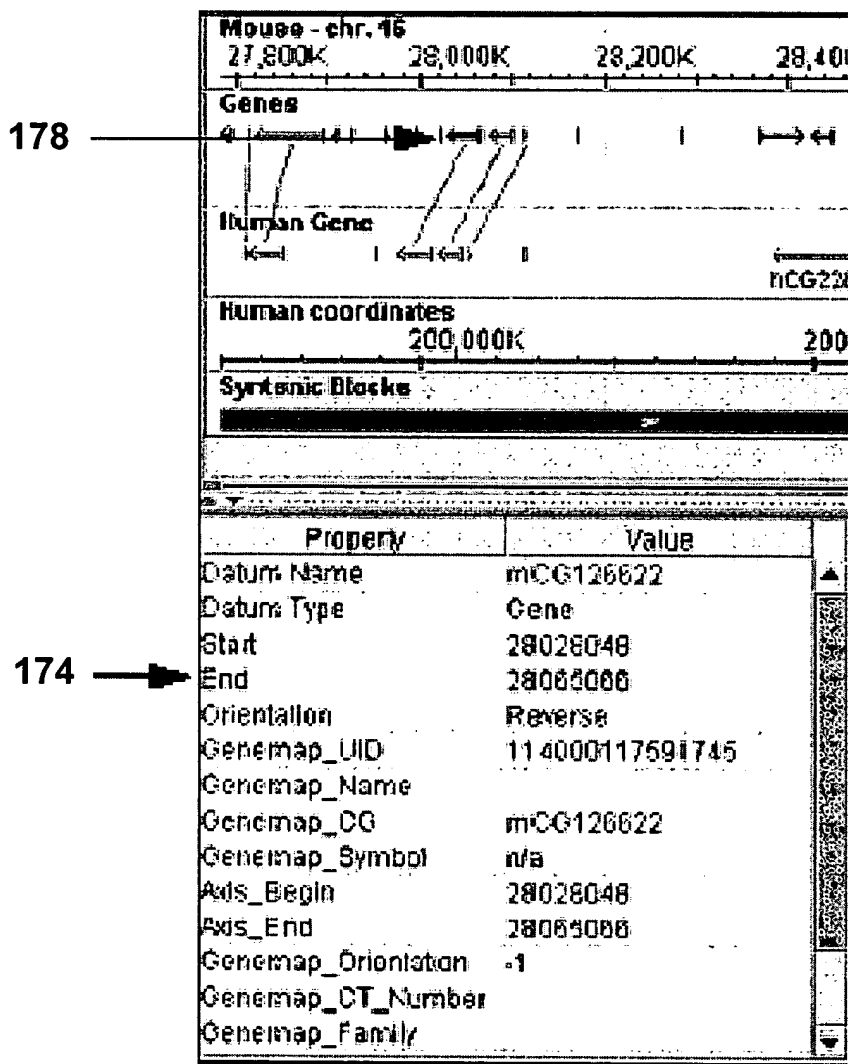


Figure - 10

10/22

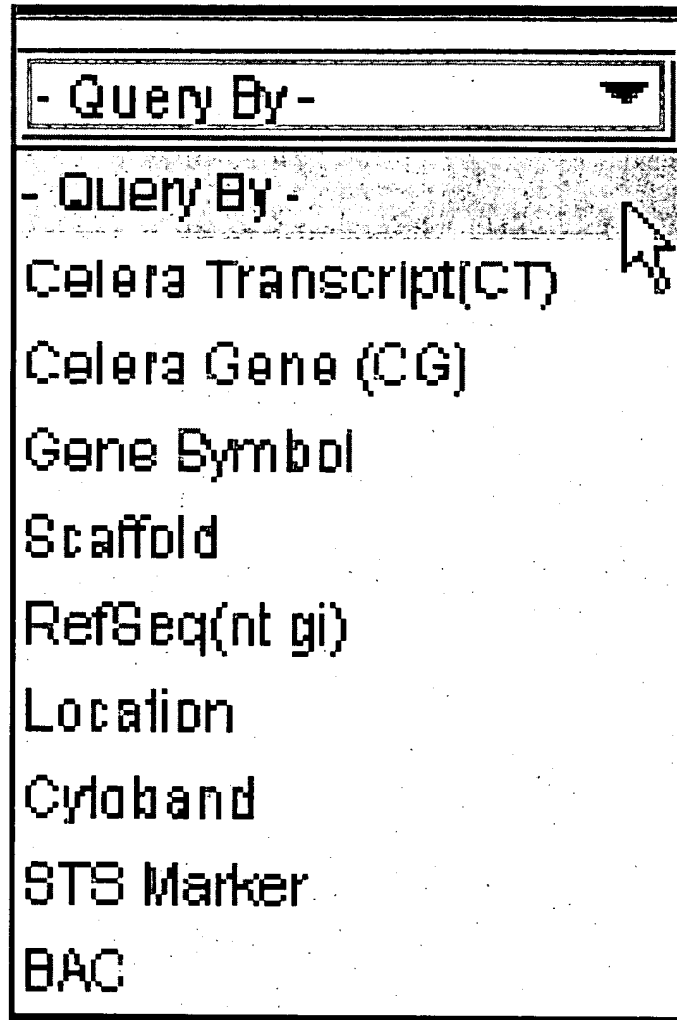


Figure - 11

11/22

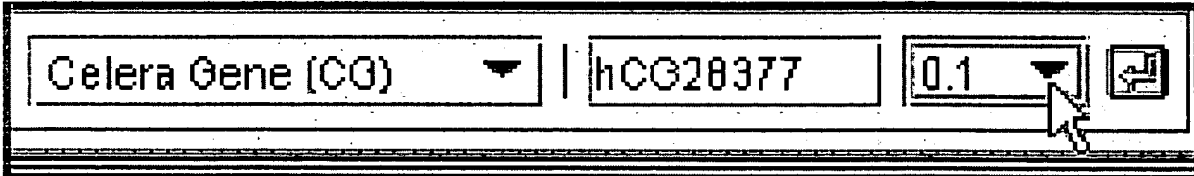


Figure - 12

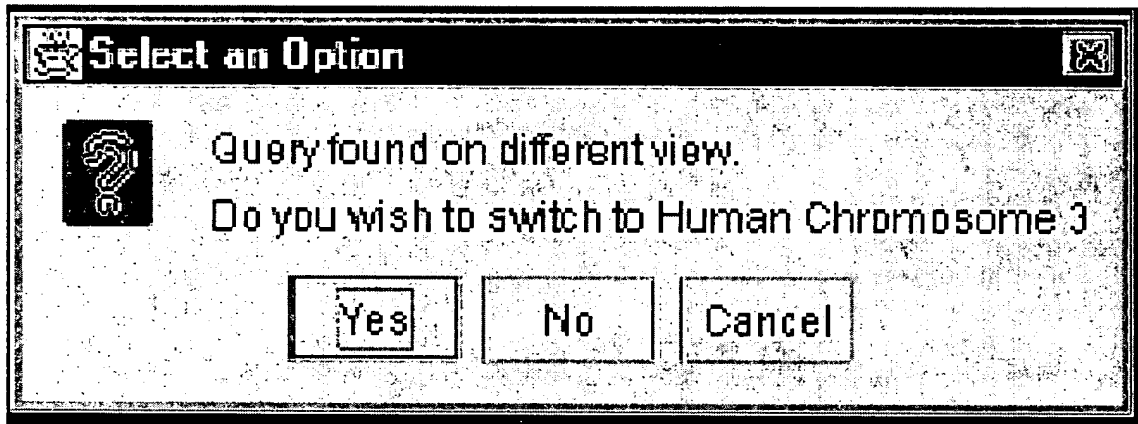


Figure - 13

Title: METHOD FOR IDENTIFYING, VIEWING, AND ANALYZING SYNTENIC AND
ORTHOLOGOUS GENOMIC REGIONS BETWEEN TWO OR MORE SPECIES

Inventors: Moore, et al
Atty. Ref.: 9692-000030

12/22

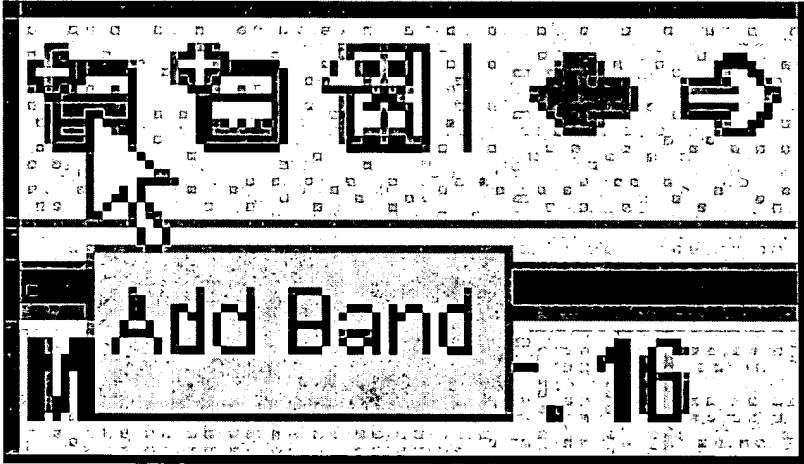


Figure - 14

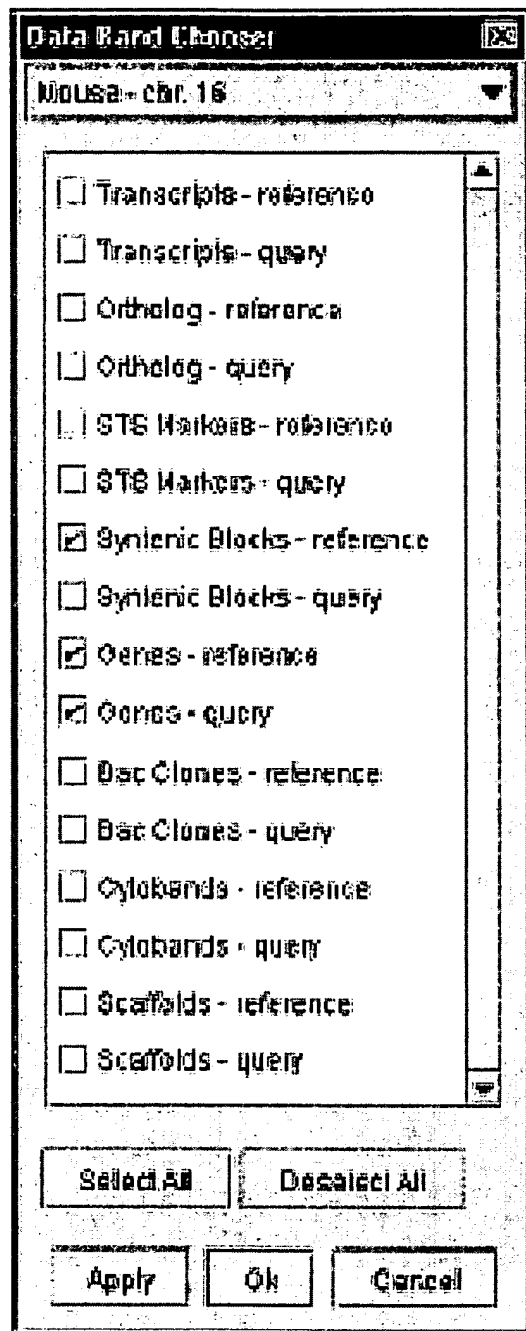


Figure - 15

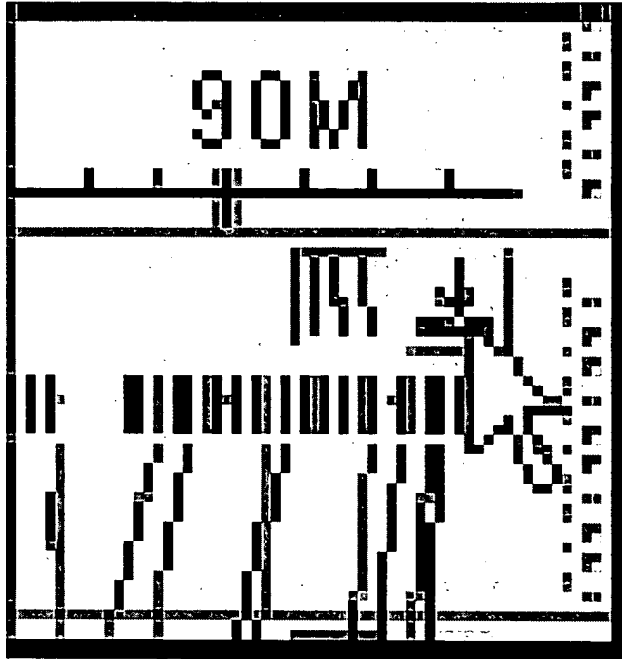


Figure - 16

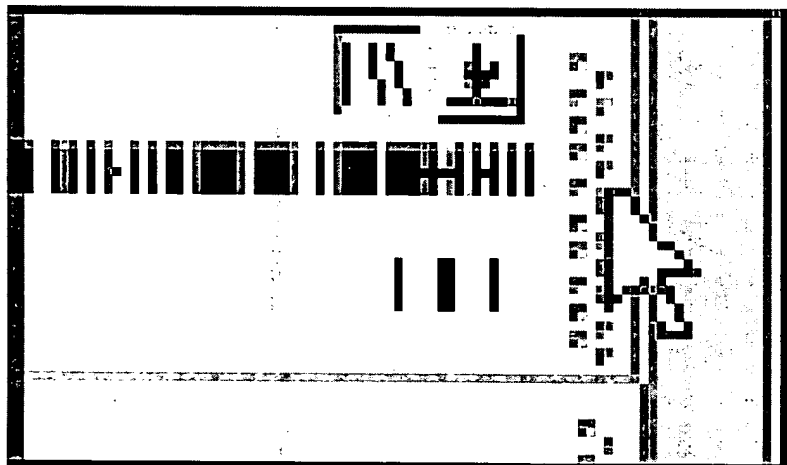


Figure - 17

15/22

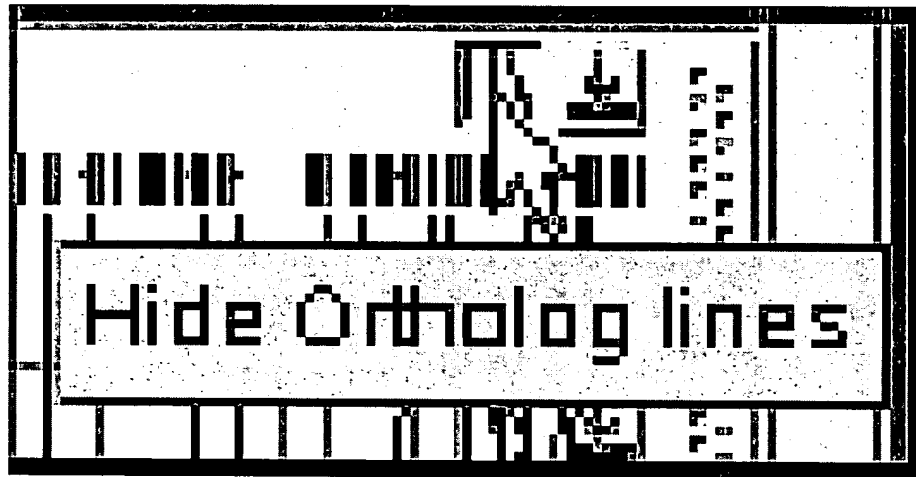


Figure - 18

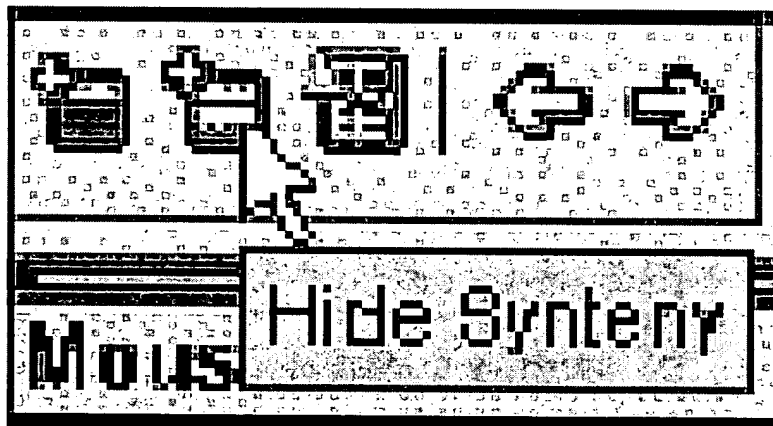


Figure - 19

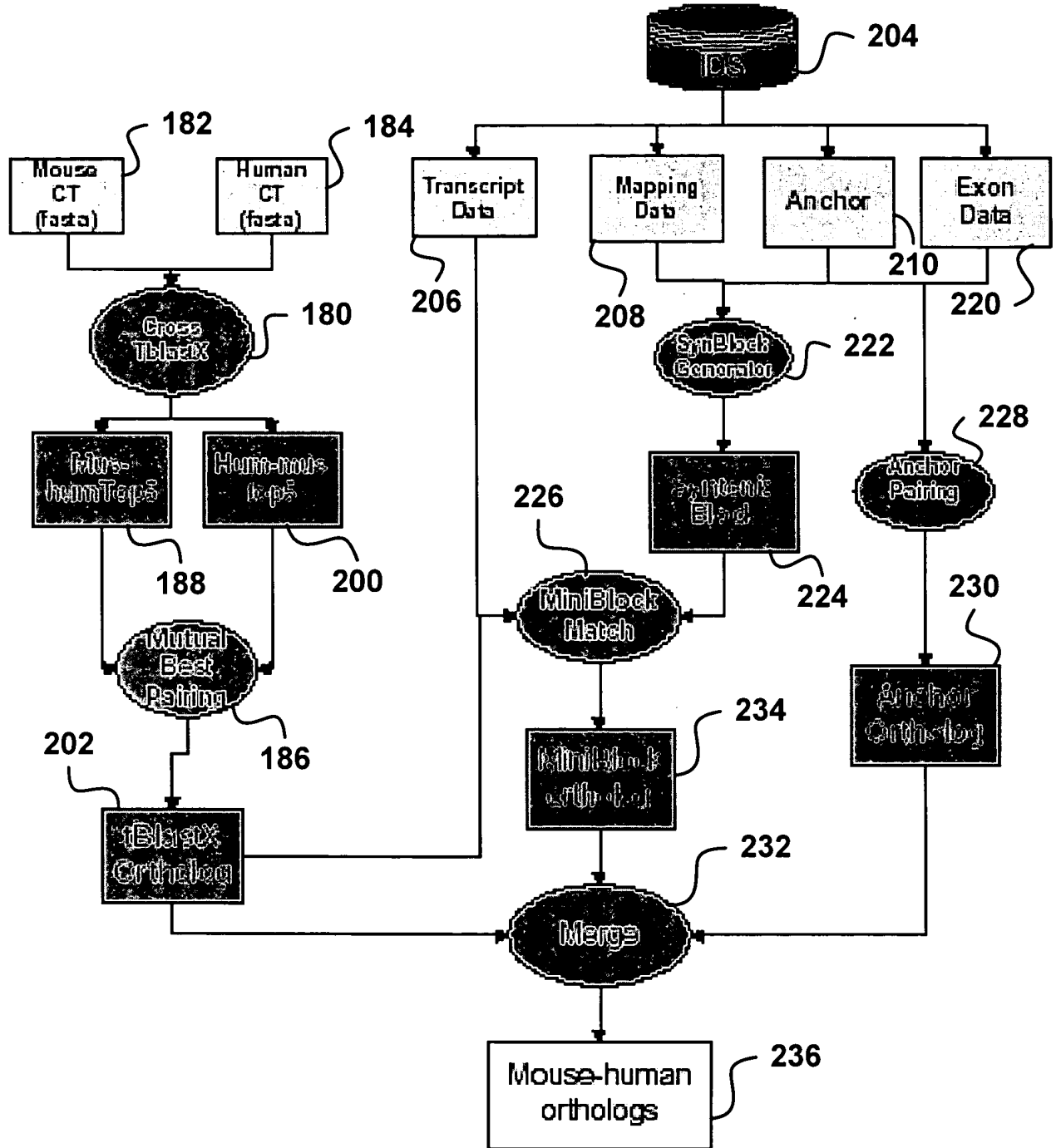


Figure - 20

Title: METHOD FOR IDENTIFYING, VIEWING, AND ANALYZING SYNTENIC AND ORTHOLOGOUS GENOMIC REGIONS BETWEEN TWO OR MORE SPECIES

Inventors: Moore, et al
Atty. Ref.: 9692-000030

17/22

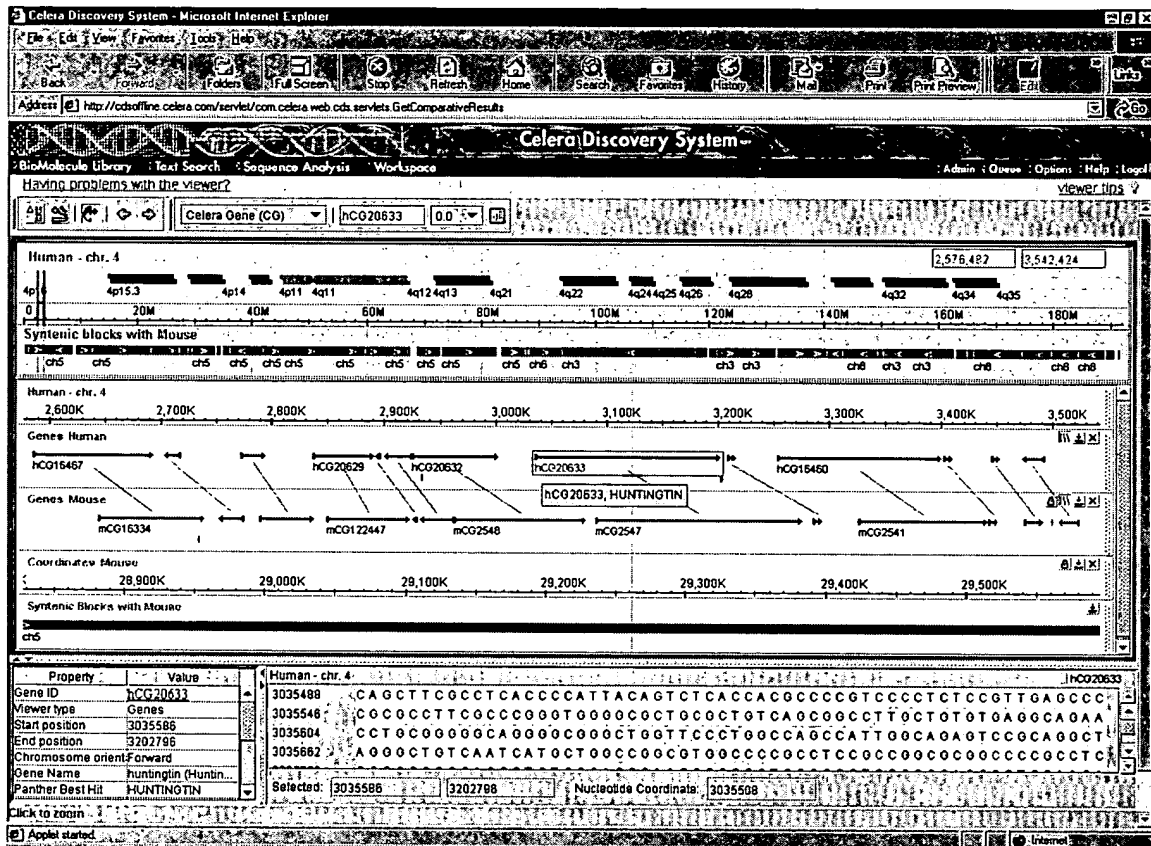


Figure - 21

Title: METHOD FOR IDENTIFYING, VIEWING, AND ANALYZING SYNTENIC AND ORTHOLOGOUS GENOMIC REGIONS BETWEEN TWO OR MORE SPECIES

Inventors: Moore, et al
Atty. Ref.: 9692-000030

18/22

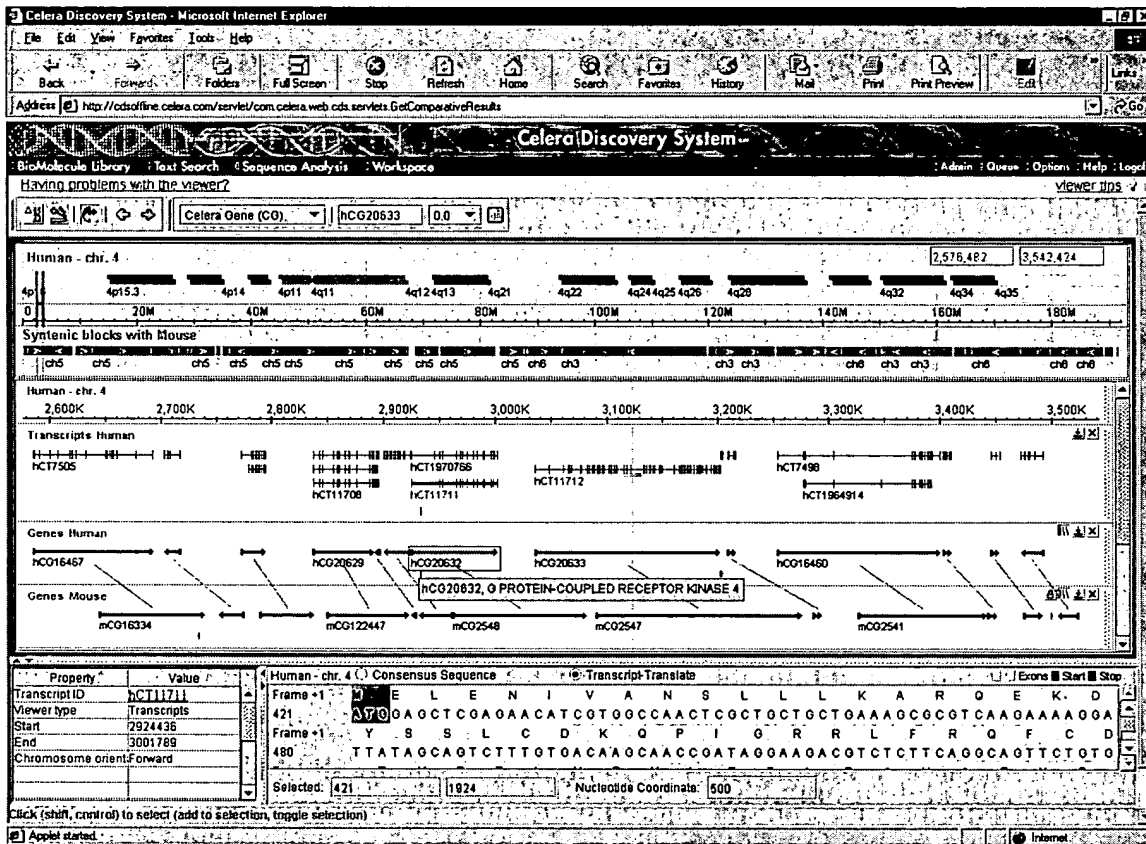


Figure - 22

Title: METHOD FOR IDENTIFYING, VIEWING, AND ANALYZING SYNTENIC AND ORTHOLOGOUS GENOMIC REGIONS BETWEEN TWO OR MORE SPECIES

Inventors: Moore, et al
Atty. Ref.: 9692-000030

19/22

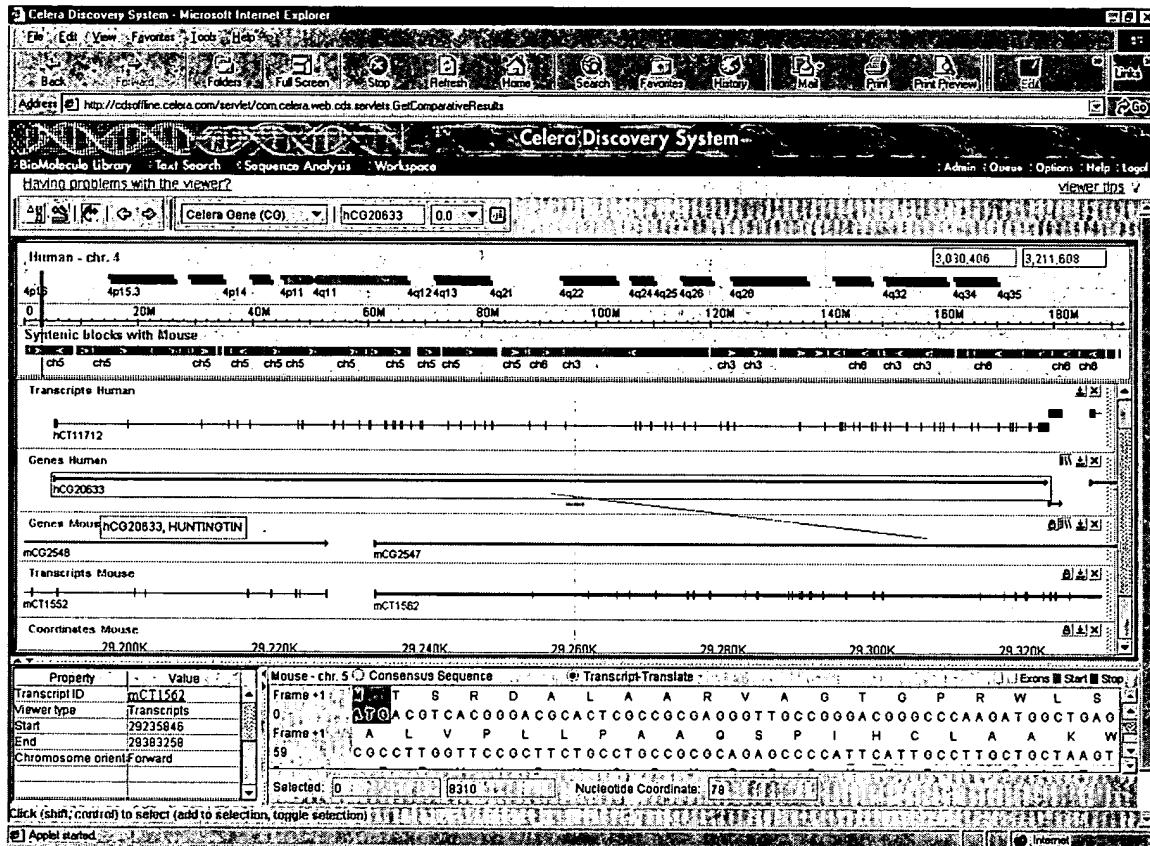


Figure - 23

Title: METHOD FOR IDENTIFYING, VIEWING, AND ANALYZING SYNTENIC AND ORTHOLOGOUS GENOMIC REGIONS BETWEEN TWO OR MORE SPECIES

Inventors: Moore, et al
Atty. Ref.: 9692-000030

20/22

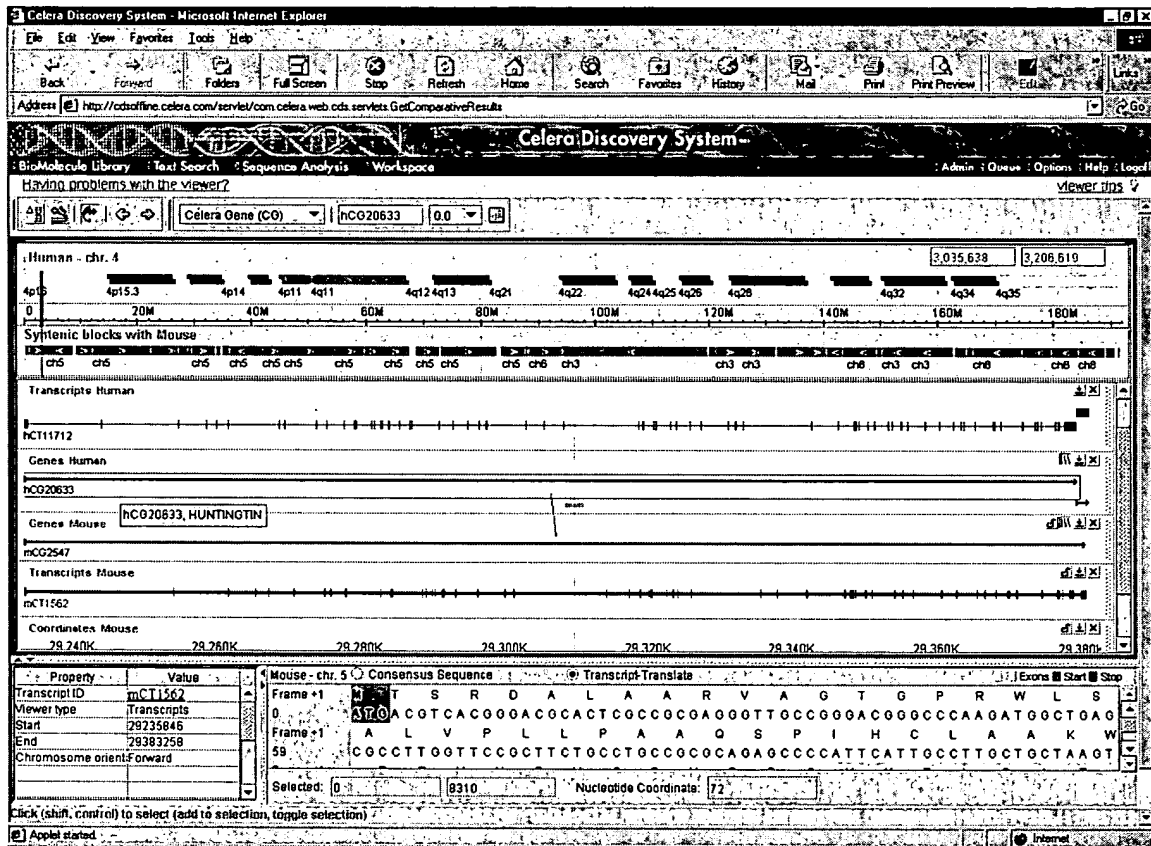


Figure - 24

Title: METHOD FOR IDENTIFYING, VIEWING, AND ANALYZING SYNTENIC AND ORTHOLOGOUS GENOMIC REGIONS BETWEEN TWO OR MORE SPECIES

Inventors: Moore, et al
Atty. Ref.: 9692-000030

21/22

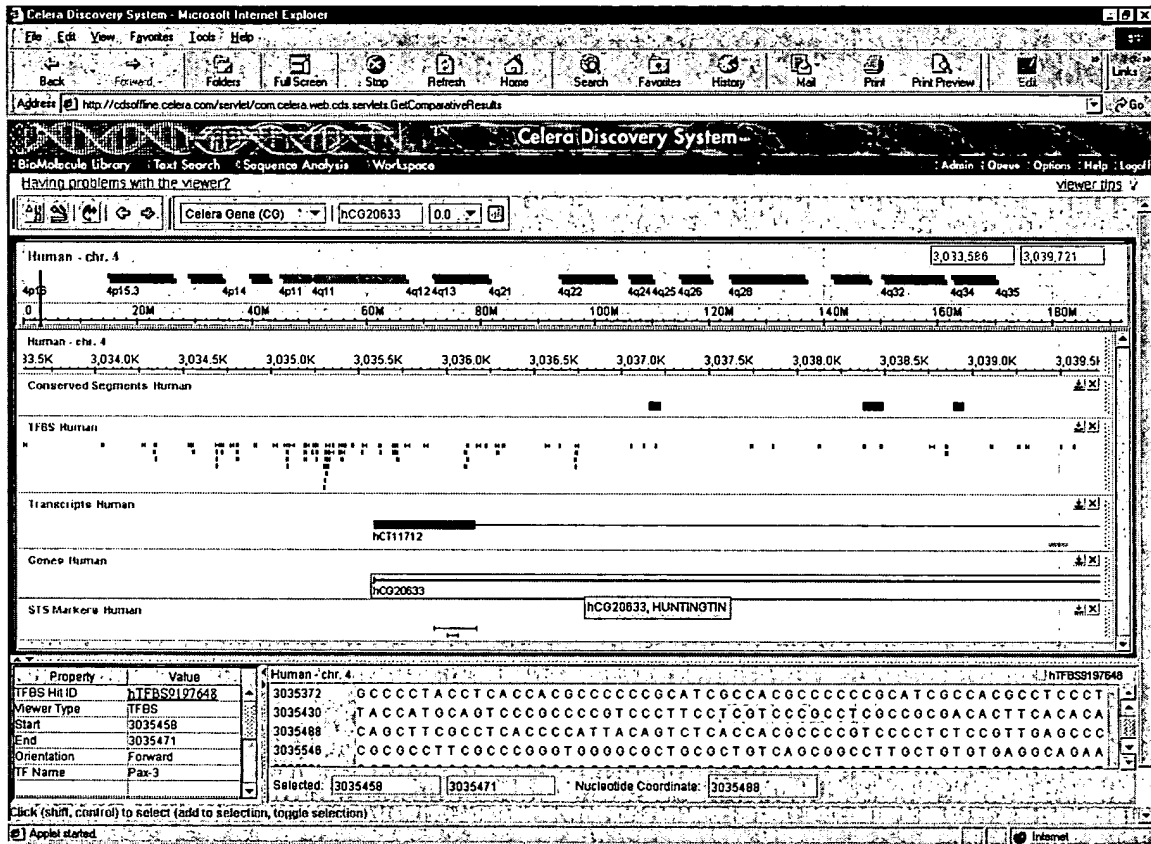


Figure - 25

Title: METHOD FOR IDENTIFYING, VIEWING, AND ANALYZING SYNTENIC AND ORTHOLOGOUS GENOMIC REGIONS BETWEEN TWO OR MORE SPECIES

Inventors: Moore, et al
Atty. Ref.: 9692-000030

22/22

Property	Value	Property	Value	Property	Value
Syntenic Block ID	hmSB1233	Transcript ID	hCT17498	BAC ID	AL390065
Viewer type	Syntenic Blocks	Viewer type	Transcripts	Viewer type	Bac Clones
Start: Mouse	1149235	Start	3254119	Start position	2876899
End: Mouse	3811691	End	3400189	End position	3050577
Orientation: Mouse	Forward	Chromosome orient	Forward	Chromosome orient	Reverse
Start: Human	1149235				
End: Human	3811691				
Chromosome: Mouse	5				
Chromosome: Human	4				
Orientation: Human	Forward				

Property	Value	Property	Value	Property	Value
Conserved Segment	208000003331535	Cytoband Name	4p16	STS Marker ID	UniSTS:7537
Viewer Type	Conserved Segme...	Viewer type	Cytobands	Viewer type	STS Markers
Start: Human	3991844	Start position	0	Start position	4029422
End: Human	3992014	End position	15227048	End position	4029563
Orientation: Human	Forward	Chromosome orient	Forward	Orientation	Uncertain
Score	80				
Chromosome: Mouse	5				
Begin: Mouse	32737628				
End: Mouse	32737798				
Orientation: Mouse	Forward				

Property	Value	Property	Value	Property	Value
Scaffold ID	GA_x5J8B7PY1MB	Syntenic anchor ID	hmSA17902	TFBS Hit ID	hTFBS9211691
Viewer type	Scaffolds	Viewer type	Syntenic Anchors	Viewer Type	TFBS
Start position	4113701	Chromosome: Mouse	5	Start	1396467
End position	8846693	Start: Mouse	2556830	End	1396485
Chromosome orient	Reverse	End: Mouse	2557097	Orientation	Forward
		Orientation: Mouse	Forward	TF Name	NF-1
		Chromosome: Human	4		
		Start: Human	2556830		
		End: Human	2557097		
		Orientation: Human	Forward		

Figure - 26